

**THE CORPORATION OF THE CITY OF ST. THOMAS
THE FOURTH MEETING OF THE ENVIRONMENTAL STEWARDSHIP
COMMITTEE**

COMMITTEE ROOM #304

JULY 12, 2018

2:00 p.m. The meeting convened with Mayor Heather Jackson, Chair presiding.

ATTENDANCE

Members

Mayor H. Jackson, Chair
Betsy McClure, KCCA
Harald Schraeder
Petrusia Hontar
Richard Singer
J. Tucker, Arborist

Officials

Melanie Knapp, Corporate Admin. and
Accessibility Clerk
W. Graves, City Manager
J. Lawrence, Director, Env Services
R. Tucker, Director, Parks, Rec & Prop Mgmt

Others

John Sanders, City Solicitor
Dave Collins, 166 Lake Margaret Trail
Beatrice Arroyas, 134 Lake Margaret Trail

DISCLOSURES OF INTEREST

None.

MINUTES

Motion by J. Tucker – B. McClure:

THAT: The minutes of the meeting held on May 10, 2018 be confirmed.

Carried.

NEW BUSINESS

Overview of KCCA Environmental Policies/Interests - Appendix “A”

Ms. McClure gave a Power Point presentation of the KCCA Environmental Policies including environmental monitoring, stewardship, outreach and the conservation areas.

Mr. Schraeder asked if there were any agreements with private landowners to ensure the Authority's investments in natural habitat development projects were not undone in future.

Ms. McClure stated that most often there were agreements in place with the landowners.

Ms. Hontar asked if there were any improvements in Lake Margaret relating to the phosphorous in the system after the education campaign.

Ms. McClure stated that it was hard to quantify the numbers but the education aspect was a success.

The members discussed organizing another phosphorus campaign to raise awareness. Dumping and tidy lot issues could also be included in the education piece.

The City Manager asked about the role of the City relating to deforestation.

Ms. McClure said that there are large scale clearings in the City and KCCA is always looking for sites to plant more trees.

The members discussed inviting the Ministry of Natural Resources to speak to the Committee about the deer population in the City.

Mr. Singer asked about the water testing in the area.

CONFIRMED_____CHAIRMAN

4th Meeting of the Environmental Stewardship Committee - 2

Ms. McClure explained that staff take the water samples and then they are sent to an outside lab to analyze.

Mr. Singer asked about the sourcing of the trees and seeds.

Ms. McClure explained that the seeds are sourced locally. The size of seedlings depends on the species, locations and amounts.

The Chair thanked Ms. McClure for her presentation.

Overview of Legal Status of City Lands

Mr. Sanders gave an overview of the transfer of the Lake Margaret lands from Doug Tarry Limited to the City. Plans had begun as early as 2000 and the transfer was finally complete in January, 2018.

The City Manager stated that the Parks By-law was being updated. This would include enforcement tools for encroachments onto public lands as well as fishing and boating in prohibited areas.

Mr. Sanders stated that warnings are often given first and then fines issued. The list of fines will be approved by the Province first.

Mr. Schraeder asked whether any accommodations had been made with residents when land transfers took place concerning any previous use of the properties.

Mr. Sanders stated that the land registry office would have the ownership details of the area but that there were no individual accommodations transferred to the City.

The members discussed the Parks, Recreation and Property Management Department maintaining the area including putting up public signage and adding some fencing. This Department would also be enforcing the new Parks By-law.

Mr. Collins mentioned the fact that there were purchase agreements in place with Doug Tarry Limited that suggested owning the land six inches past the fences on the properties surrounding the lake.

Mr. Sanders stated that the City owned the purchase agreements now and that Mr. Collins would have to take arrangements up with Doug Tarry Limited.

Discussion of Lake Margaret Tour Observations

The members discussed Parkside Collegiate Institute using water from the Lake Margaret area.

Mr. Schraeder mentioned his concern there is no access development to or beyond the water's edge for persons who are physically challenged and who may also wish to also benefit from viewing the lake from accessible platforms.

The members discussed using natural barriers and native shrubs in the Lake Margaret area.

Mr. Singer asked about the impact of water levels in Lake Margaret from the new development of Miller's Pond.

The Director, Environmental Services and City Engineer stated that the impact will be very low and the same quantity of water will keep going into Lake Margaret.

Mr. Singer asked about the pressure treated poles in the Lake Margaret area.

The Director, Parks, Recreation and Property Management stated that the poles will be removed and a walk through of the Lake Margaret area will be done with the City's insurance company. Benches will also be purchased for the area.

Next Meeting

4th Meeting of the Environmental Stewardship Committee - 3

The City Manager stated that the Director of Planning and Building Services would be at the next meeting to speak to the Committee.

The City Manager stated that staff would work on a preliminary template of priorities for the next Committee meeting.

Correspondence

The members were in receipt of correspondence from David Collins regarding promotion activities in and around Lake Margaret.

The Chair thanked Mr. Collins for submitting his great ideas and the Committee would review them in the near future.

Birds - Fishing Lines

Ms. Arroyas stated that Lake Margaret was an important part of the City and was concerned about fishing lines hurting the birds in the area. She said that some residents do try to clean up empty bottles and fishing lines.

The Chair mentioned that the Committee would review the bird count and guides for the area.

NEXT MEETING

August 9, 2018 at 2:00 p.m. in Room #304

ADJOURNMENT

3:22 p.m. The meeting adjourned.

CONFIRMED_____CHAIRMAN



Kettle Creek
Conservation Authority



**City of St. Thomas
Environmental Stewardship
Committee**

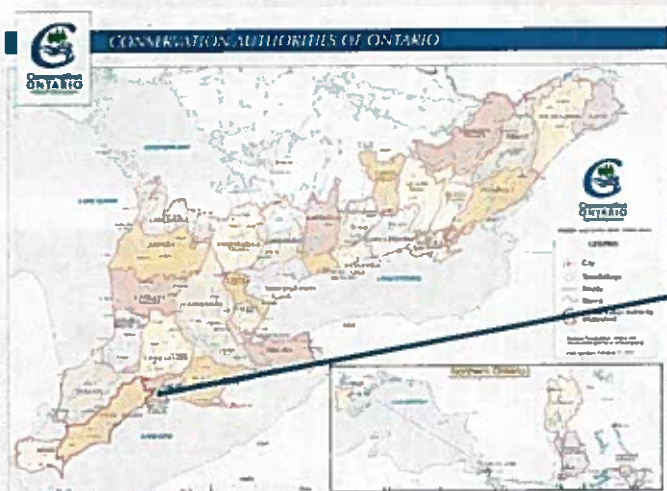
July 12, 2018



Kettle Creek
Conservation Authority

Who are we?

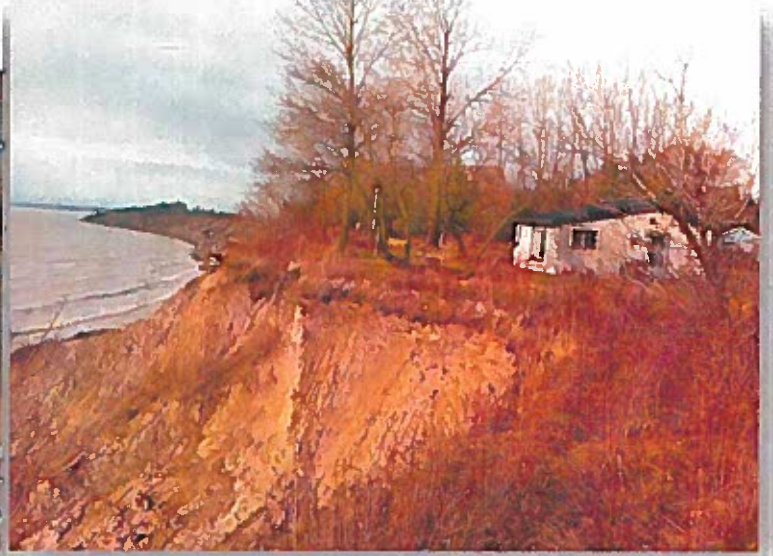
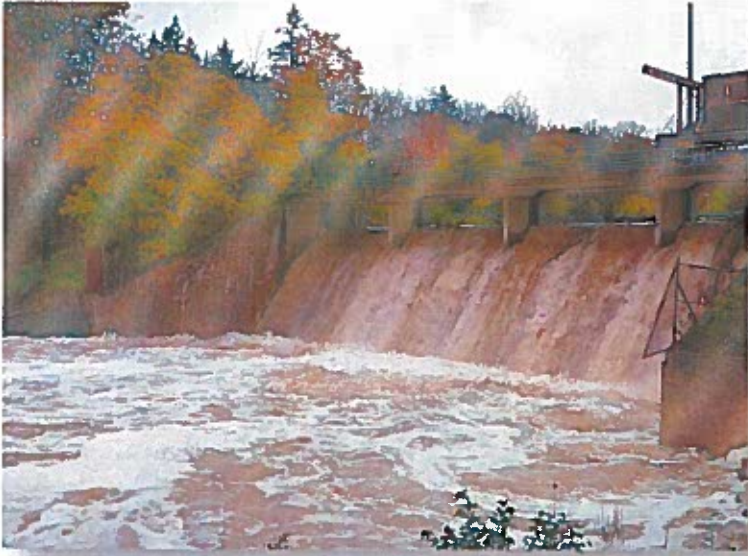
KCCA is mandated to ensure the conservation, restoration and responsible management of the watershed's water, land and natural habitats through programs that balance human, environmental and economic needs.





Kettle Creek
Conservation Authority

KCCA Mandates



Kettle Creek
Conservation Authority

Conservation Areas





The map displays the Thames River watershed with various sampling locations marked by colored dots. The locations are distributed across several municipalities and townships, including Middlesex Centre, London, Thames Centre, Malahide, St. Thomas, Central Elgin, and Southwold. The legend indicates that blue dots represent surface water quality sampling, yellow dots represent electrofishing, red dots represent groundwater quality, and green dots represent benthic sampling. The map also shows the river's course, major roads, and the proximity to Lake Erie.



- Surface water samples were collected from Lake Margaret, Eames Drain and the outlets to Pinafore Lake and Mill Creek from May to November 2016
- Results suggested that water quality is within the expected range for this type of water body
- Most sample values were under the provincial water quality standards except for Total Phosphorus, which consistently exceeded the PWQO.
- Aquatic wildlife appears to be healthy and abundant.



Kettle Creek
Conservation Authority

Stewardship and Outreach



Kettle Creek
Conservation Authority

Tree Planting



Highway #3 Bypass in St. Thomas



Kettle Creek
Conservation Authority

Tree Planting



VA Barrie Park



Elgin Court P.S.



Kettle Creek
Conservation Authority

Stewardship

- Kettle Creek Clean Water Initiative
- Elgin Clean Water Program





Kettle Creek
Conservation Authority

Stewardship

Wetland Creation at V.A. Barrie Park



Kettle Creek
Conservation Authority

Stewardship



Tallgrass Prairie Planting at Forest City Castings





Community Based Social Marketing Campaign Targeting Phosphorus Reduction in the Lake Margaret Area

Participation:

- 82 households reached
- 88% participated

Use and Awareness:

- 89% use lawn-care products

CBSM Materials:

- 95% took stickers
- 44% posted lawn signs

Commitments:

- 92% made a commitment to discontinue using products with phosphorus
- 82% made both verbal and written commitments



Raise awareness of best practices for landowners living adjacent to ravines

- Survey
- Clean Ups
- Tree Planting
- Factsheet
- Signage





Kettle Creek
Conservation Authority

Education and Awareness



Kettle Creek
Conservation Authority



Questions?

Betsy McClure
betsy@kettlecreekconservation.on.ca
519-631-1270 x229