

**THE CORPORATION OF THE CITY OF ST. THOMAS**  
**A G E N D A**  
**THE SEVENTH MEETING OF THE SPECIAL EVENTS COMMITTEE**

**COMMITTEE ROOM 204**  
**CITY HALL**

**3:00 P.M.**

**JUNE 14, 2017**

**PETITIONS AND COMMUNICATIONS**

**Ribfest - July 20-24, 2017 Pages 2-6**

**UNFINISHED BUSINESS**

**NEW BUSINESS**

**ADJOURNMENT**





June 9, 2017

TO: St Thomas Special Events Committee  
RE: St Thomas RibFest Site Plan for Pinafore Park  
FROM: Family Shows Canada

Attached are 3 Site Plans for the St Thomas RibFest. One is an overview of the whole park, showing the area where RibFest will be located. The second is a larger detailed map of the RibFest area. The third is a detailed map of the licensed Beer Garden.

We have strived to address all the concerns expressed at the Wednesday Special Events Committee meeting.

On Friday, we met with Tim Bridge from the City to review the existing infrastructure in the park and based on his suggestions we made some further modifications.

This is a summary of what we are proposing to the Special Events Committee regarding the actual festival site plans. Further details about the RibFest are contained in the St Thomas RibFest Festival Guide previously sent to the committee members.

1. The rides have been removed from the overflow parking area.
2. There will not be any necessity to close any roads or walking paths.
3. As the festival is now contained in one area, there will not be any need for children to cross roads because of the festival.
4. There will be a 10-ft. barrier between tents where required.
5. All festival infrastructure, tents, ribbers, rides, etc. will be from 25-75 ft from roadways.
6. There will be lots of green space between the festival and the pavilions.
7. The festival will not be affecting any of the existing traffic patterns within the park that people are accustomed to using now.
8. In addition to the 12 washrooms in the West pavilion, we will have 10 rented porta-johns on the festival grounds, along with sinks and sanitizer stations.

9. Family Shows will be providing and paying for the necessary infrastructure to have 30amp and 60amp service to some of our exhibitors. We will also be using the existing 15amp services currently in the park.
10. The Beer Garden will be 3,200 sqft and the maximum number of patrons allowed at one time will be 265 based on AGCO rules. During quiet times, we anticipate having 50-75 patrons in the Beer Garden. On Friday and Saturday evenings, we anticipate 200-265 patrons may be in the Beer Garden.
11. Family Shows has contacted Ontario One to have the appropriate professionals locate and mark all underground utility wires, water lines, etc. that may be in the festival area, to allow staking of tents. They will be contacting the City re this.
12. We will be contacting Martin Run from the city later re our picnic tables, garbage & recycle cans and grey water needs that we would appreciate assistance with.

We trust this alleviates the concerns expressed to us. We look forward to working with the City to produce a great St Thomas RibFest.

If you have any questions, please contact either of us any time.

Al Hillier, office: 519-432-5189, home: 519-663-9161, email: [alfscanada@gmail.com](mailto:alfscanada@gmail.com)

Cecil Hillier, office: 519-432-5189, cell: 519-870-9522, email: [cecilhillier@rogers.com](mailto:cecilhillier@rogers.com)

#### Attachments:

1. Pinafore Park Overview Map
2. RibFest Detail Map
3. Beer Garden Detail Map



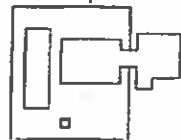
ST. THOMAS  
Parks  
Recreation

# Pinafore Park

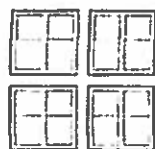
95 Elm St.

Elm St.

Pinafore Office  
and Shop



Tennis Courts



Emslie  
Ball Field

Woodlot  
Pavilion

Pinafore  
Woodlot

Pinafore Pond

North  
Pavilion

Rubbers

Hydro

Exhibitors

West  
Pavilion

East  
Pavilion

80 x 20

Exhibitors

5. Post a person

Rides

South  
Pavilion

Playground and  
Splash pad

Morris F. Jones  
Bandshell

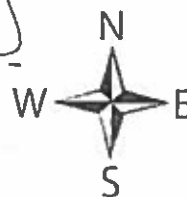
Celebration  
Pavilion

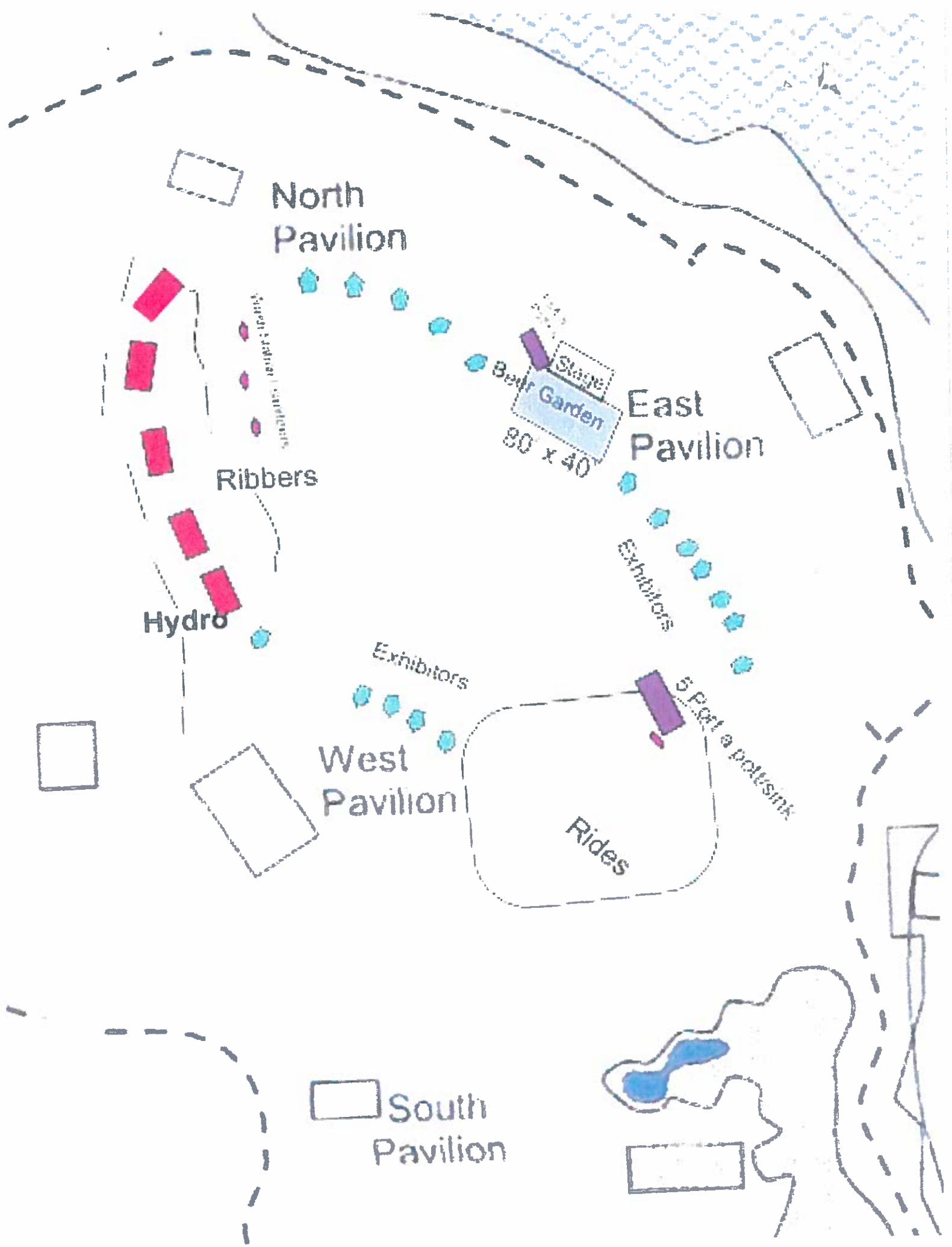
## Legend

--- Paved Walking Trail

... Un-Paved Walking Trail

□ Building



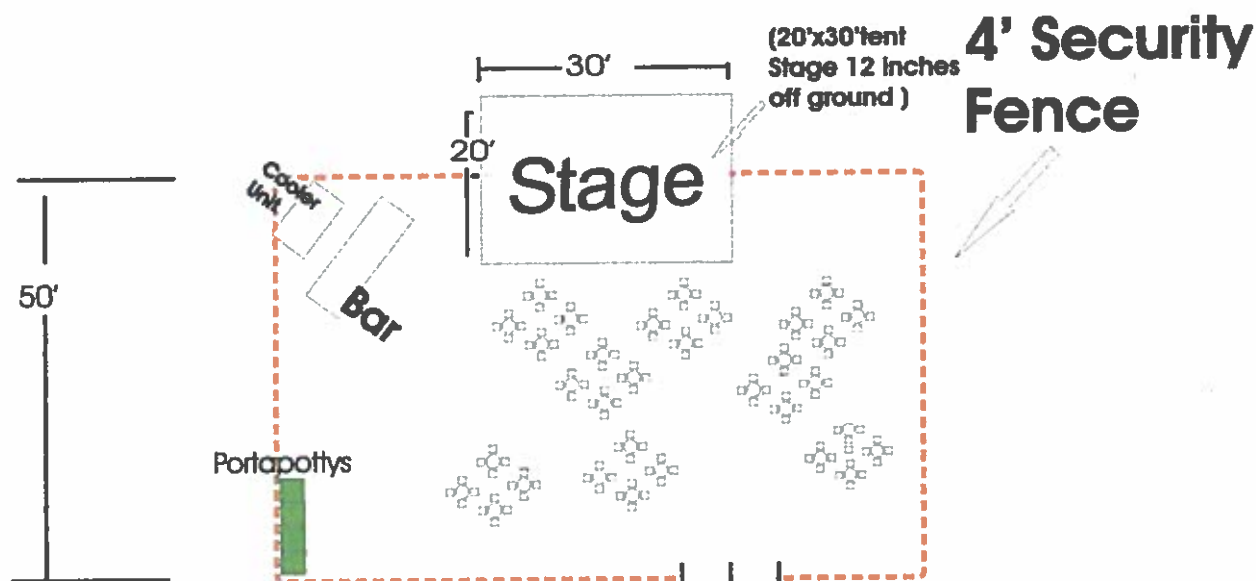


# St. Thomas Beer Garden

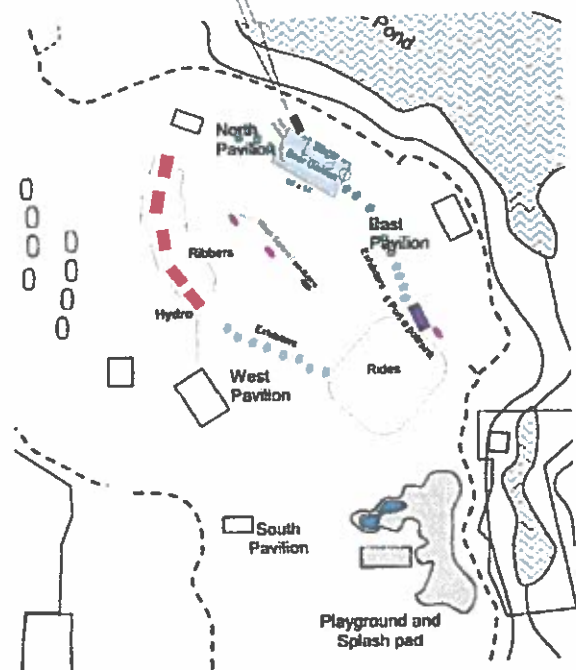
2017

St. Thomas Ribfest - July 21st, 22nd, 23rd

Beer Garden  
in Pinafore Park  
25 Elm St, St. Thomas



## Location in Park



**Net Square feet  
for Patrons = 3,300 sq. ft.**

