

Conventional Route 4 (Hospital) & Route 5b Notice

Due to Elm Street Phase 1 Temporary Road Closures, St. Thomas Transit will be detouring Route 4 & 5b as of Monday March 25th 2019 until July. In order to accommodate the potential for long delays Route 4 and Route 5b-(South Student Express) **will be an hour cycle**. The following bus stops will be out of service during this temporary road closure:

Route 4-Hospital (Stop Closure)

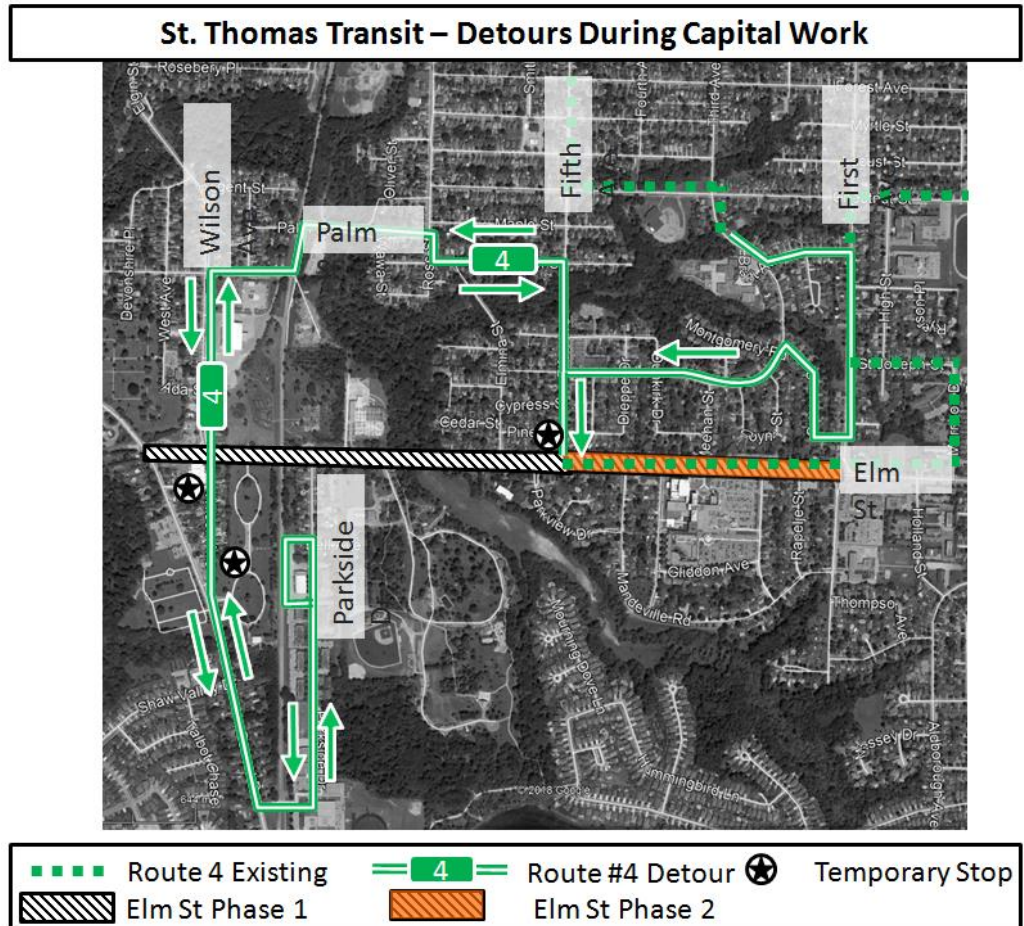
- #230 – Elm at Elmina
- #316 – Elm at Plaza
- #231 – Sunset opp. Glenbanner
- #232 – 184 Sunset- Plaza
- #233 – Sunset at Catholic Cemetery
- #238 – Parkside at Bell
- #239 – Parkside at Elm
- #240 – Elm at Pinafore Park
- #241 – Elm at Parkview

Route 4 - Temp Stop Additions

Southbound – Wilson Ave north of Glenbanner St

Northbound – Wilson Ave north of Sunset Dr

Southbound – Fifth Ave, North of Pine St



Elm Street Phase 2 closure will be much less disruptive. An updated detour for Route 4 will be posted prior to the Phase 2 closure. Regular service will return to Route 4 in November 2019. The City appreciates your flexibility and understanding in the matter.

Sorry for the inconvenience,



Matthew Vriens

Manager of Roads & Transportation

Updated Time Table for Route 4 Hospital

Nextbus ID	Description	Past the hour	Nextbus ID	Description	Past the hour
100	Transfer Point	15	temp	Wilson north of Sunset	40
219	First at Steele	16	temp	Fifth Ave north of Pine	49
220	Wellington at First	17	243	Elm at Meehan	51
221	Wellington at Caso Crossing	17	244	Elm at Rapelje	51
222	Wellington at Fourth	18	245	Elm at First	51
223	Fifth at Erie	18	246	Morrison at Elm	52
224	Fifth at Myrtle	19	247	Morrison at St Joseph	52
225	Chestnut at Fifth	19	248	St Joseph at First	53
226	Chestnut at Churchill	20	249	First at Phillip	53
227	Churchill at Brant	20	250	Chestnut at High	54
228	Churchill at Coyne west	21	251	Chestnut at Park	55
229	Churchill at Fifth	21	252	Park at Chestnut	56
230	Elm at Elmina	closed	253	Forest at Park	57
316	Elm at Wilson	closed	254	Forest at First	58
231	Sunset at Glenbanner	closed	255	First at Mary East	59
232	Sunset at Plaza	closed	100	Transfer Point	02
233	Sunset at Wilson	closed			
temp	Wilson north of Glenbanner	32			
234	Sunset at Shaw Valley	35			
235	Parkside Collegiate Institute	35			
236	Parkside at Apartments (south)	37			
237	Parkside at Apartments (north)	38			
238	Parkside at Bell	closed			
239	Parkside at Elm	closed			
240	Elm at Pinafore Park	closed			
241	Elm at Parkview	closed			
242	Elm at Mandeville	closed			

Please note:

During this construction period Route 5a Regular Service will operate service from 8:45am to 2:15pm & 3:45pm to 6:45pm during School Days.