

Conventional Route 4 (Hospital) & Route 5b Notice

Due to Elm Street Phase 2 Temporary Road Closures, St. Thomas Transit will be detouring Route 4 & 5b as of Monday July 15th 2019 until November. In order to accommodate the potential for long delays Route 4 and Route 5b-(South Student Express) **will be an hour cycle**. The following bus stops will be out of service during this temporary road closure:

Route 4-Hospital (Stop Closure)

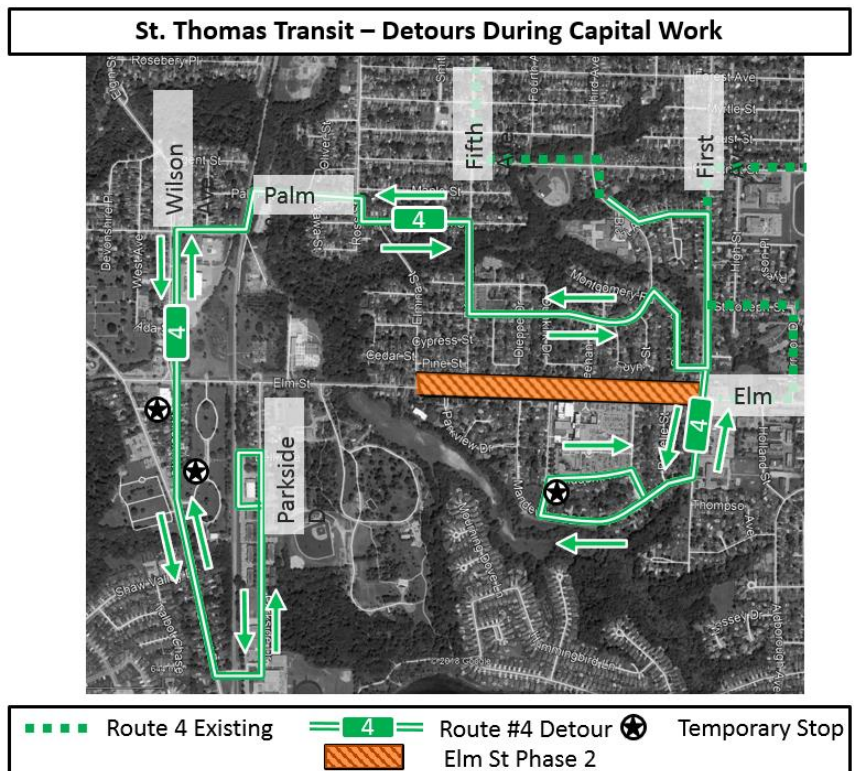
- #230 – Elm at Elmina
- #316 – Elm at Plaza
- #231 – Sunset opp. Glenbanner
- #232 – 184 Sunset- Plaza
- #233 – Sunset at Catholic Cemetery
- #238 – Parkside at Bell
- #239 – Parkside at Elm
- #240 – Elm at Pinafore Park
- #241 – Elm at Parkview
- #242 – Elm at Mandeville
- #243 – Elm at Meehan
- #244 – Elm at Rapelje

Route 4 - Temp Stop Additions

Southbound – Wilson Ave north of Glenbanner St

Northbound – Wilson Ave north of Sunset Dr

Northbound – Hepburn Ave, south of Glidden Ave



Regular service will return to Route 4 in November 2019. The City appreciates your flexibility and understanding in the matter.

Sorry for the inconvenience,

Matthew Vriens
Manager of Roads & Transportation Services

Updated Time Table for Route 4 Hospital

Nextbus ID	Description	Past the hour	Nextbus ID	Description	Past the hour
100	Transfer Point	15	238	Parkside at Bell	closed
219	First at Steele	16	239	Parkside at Elm	closed
220	Wellington at First	17	240	Elm at Pinafore Park	closed
221	Wellington at Caso Crossing	17	241	Elm at Parkview	closed
222	Wellington at Fourth	18	242	Elm at Mandeville	closed
223	Fifth at Erie	18	temp	Wilson north of Sunset	41
224	Fifth at Myrtle	19	243	Elm at Meehan	closed
225	Chestnut at Fifth	19	244	Elm at Rapelje	closed
226	Chestnut at Churchill	20	temp	Hepburn south of Glidden	48
227	Churchill at Brant	20	245	Elm at First	53
228	Churchill at Coyne west	23	246	Morrison at Elm	54
229	Churchill at Fifth	23	247	Morrison at St Joseph	54
230	Elm at Elmina	closed	248	St Joseph at First	55
316	Elm at Wilson	closed	249	First at Phillip	55
231	Sunset at Glenbanner	closed	250	Chestnut at High	56
232	Sunset at Plaza	closed	251	Chestnut at Park	57
233	Sunset at Wilson	closed	252	Park at Chestnut	58
temp	Wilson north of Glenbanner	31	253	Forest at Park	59
234	Sunset at Shaw Valley	34	254	Forest at First	00
235	Parkside Collegiate Institute	34	255	First at Mary East	01
236	Parkside at Apartments (south)	36	100	Transfer Point	02
237	Parkside at Apartments (north)	37			

During this construction period Route 5a Regular Service will operate service from 8:45am to 2:15pm & 3:45pm to 6:45pm during School Days.