

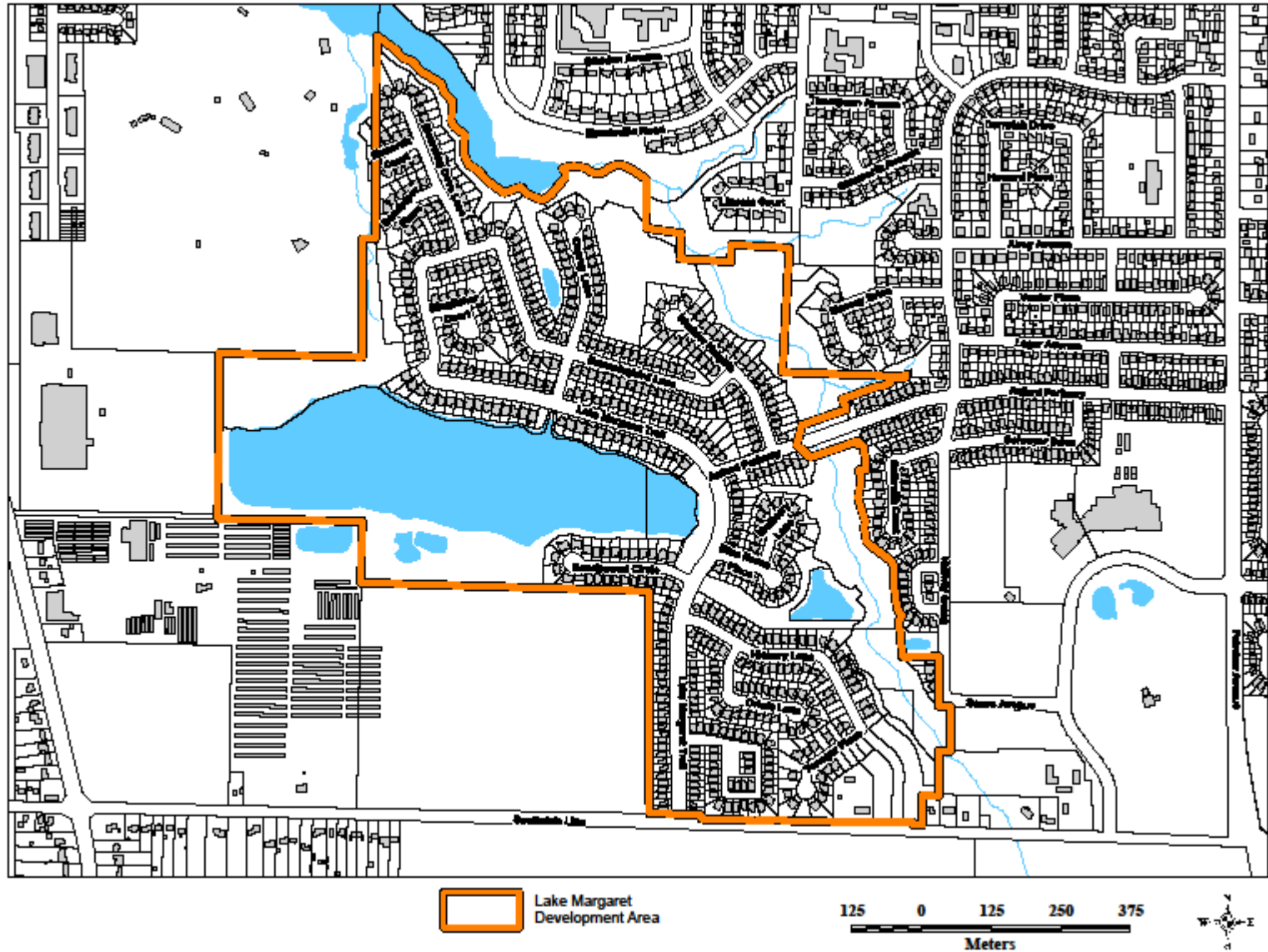
LAKE MARGARET MANAGEMENT AREA

STATUS OVERVIEW

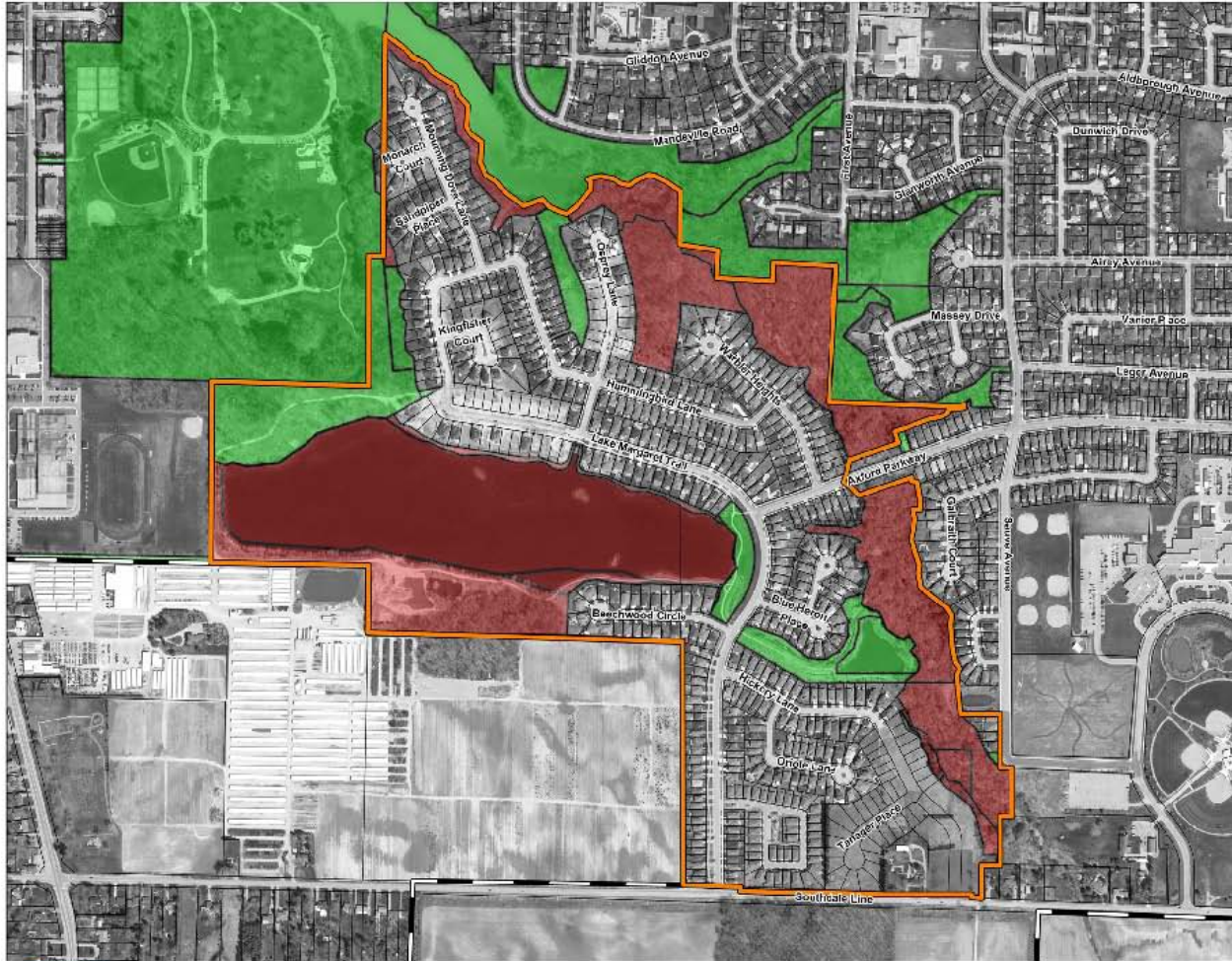
April 24, 2017



LAKE MARGARET MANAGEMENT AREA



PROPOSED LAND TRANSFER



 Lake Margaret Development Area

 Existing City owned lands

 Lands Proposed to be Transferred to City

130 0

MAJOR ACTIVITIES

Block Plan of Subdivision Approved : Oct. 2000.. 1st 90 lots approved Dec 2000

2002 : Lake Margaret Conservation Area Master Plan

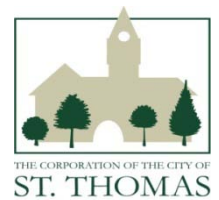
2010 : Lake Margaret Environmental Management Plan

Public Information Session : November 2008

Public Information Session January 2010

2013 : Lake Margaret Water Quality Management Strategy

Public Information Session : June 2014



FOCUS AREAS

1. Environmental Monitoring – Lake Margaret
2. Identify / remove significant tree risks in valleylands
3. Identify / remove old stream crossing structures

2016 Environmental Monitoring:

- Testing performed by KCCA using Fire Department for lake access
- Used same locations as 2010 and 2011 data
- Monthly testing from May to November, 2016
- Sample locations include; inlets, outlets, shallow lake tests and deep lake tests.
- Lab testing for Ammonia, Nitrate, Phosphorous, Bacteria, Dissolved Oxygen, pH, Suspended solids, and Conductivity.
- Visual observations on aquatic and terrestrial

General Observations:

1. Water quality is within expected ranges for this type of water body.
2. Aquatic and terrestrial plant and animal life appears healthy and abundant.
3. Comparable results to 2010 and 2011 testing
4. Bacteria testing would meet recreational guideline for swimming although qualification would require a much more rigorous testing regime and was not the intent of the study.
5. There is a risk in all water bodies of this type and size become eutrophic due to high phosphorous and/or suspended solids. This would result in lower dissolved oxygen and potential negative aquatic impact.
6. Full report available for review on City website.

Actions to maintain and improve water quality:

1. Council:
 - Support sustainable future development in watershed
 - Engage the community to help with water quality

2. City Staff
 - Monitor water quality
 - Ensure highest value storm water management for future development
 - Partner with community to make environmental improvements with continuous improvement model

3. Community – Reduce fertilizer use in existing and future subdivisions.
 - Participate in environmental improvement programs
 - Water quality in down stream receivers from Lake Margaret including Pinafore Pond, Kettle Creek, and then Lake Erie are under significant pressure from high nutrients causing algal outbreaks. See www.letstalklakeerie.com for more information.

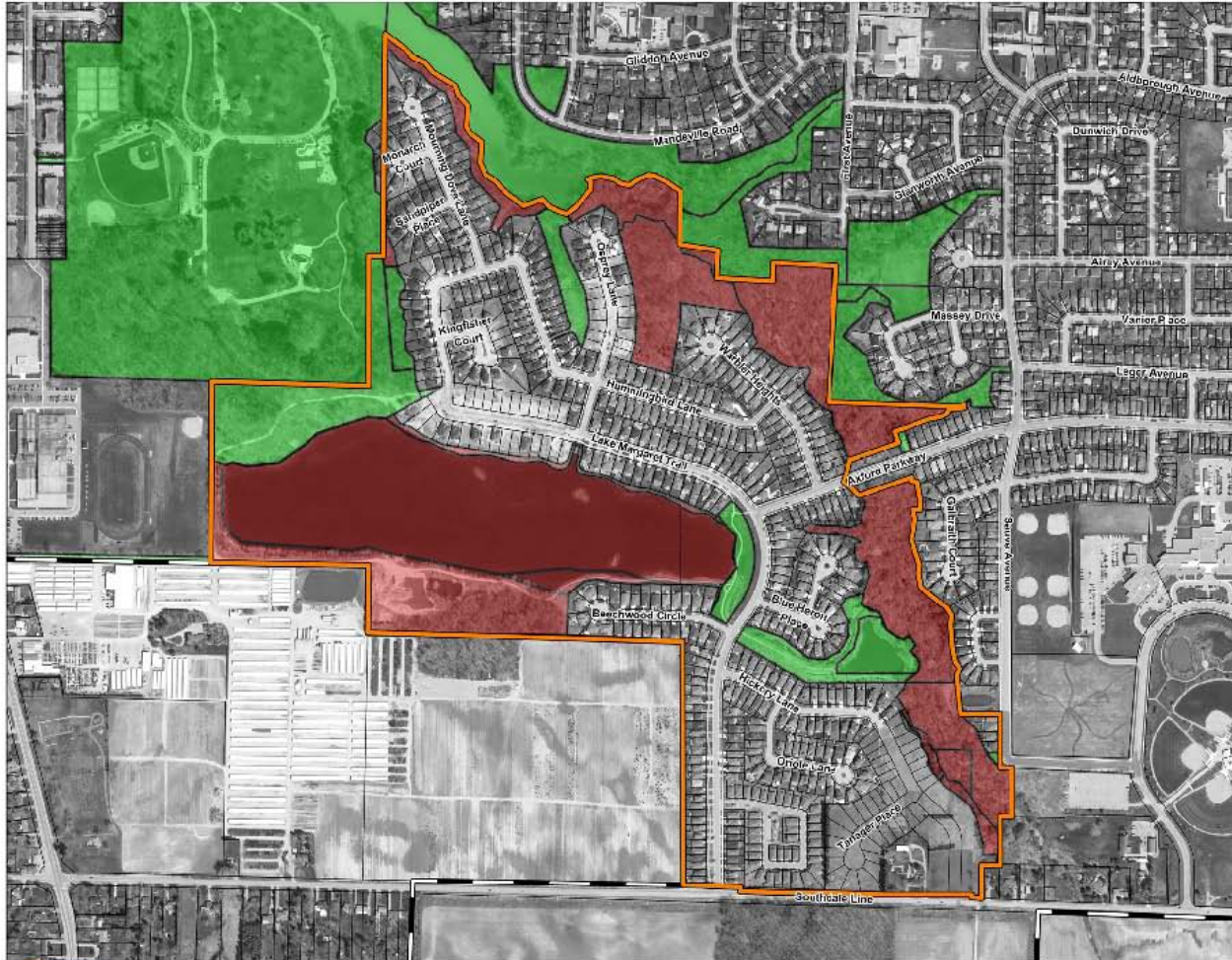
SOME ENVIRONMENTAL ISSUES FOR FUTURE DISCUSSION / REVIEW

1. Stability of shoreline
2. Water use – Parkside
3. Geese
4. Fishing
5. Introduction of plant materials

PROPOSED ENVIRONMENTAL STEWARDSHIP COMMITTEE

- The ESC will be a Select Committee of Council
- Membership will include: Members of City Council
 - Parks and Recreation Department
 - Environmental Services Department
 - KCCA Administration
 - St. Thomas – Elgin Homebuilders Association
 - Citizen Members
- Establish environmental stewardship priorities for natural environment
- Establish an environmental stewardship natural environment action plan for the City
- For first two years... main focus will be on the Lake Margaret Area
- Provide education / resources relating to environmental stewardship to community
- Focus on “public” environmental spaces
- Provide an annual report to City Council
- Seek environmental stewardship funding opportunities
- Recommend priorities for potential budget allocations
- Liaise with municipal staff as new development areas are being proposed which include environmentally sensitive areas
- Seek out / pursue community driven participation in stewardship activities / events

PROPOSED LAND TRANSFER – Legal Review to be Completed



QUESTIONS / COMMENTS ?