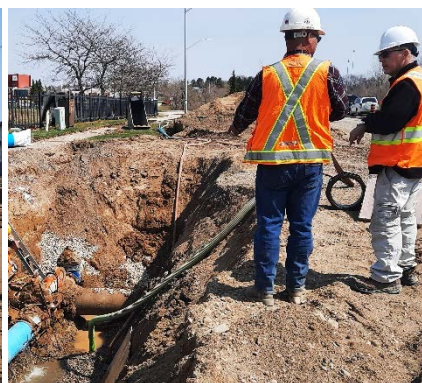


Construction Update # 3

UPDATE NO.:	003	CONTRACT NO. 21001
DATE ISSUED:	April 9, 2021	
PROJECT NAME:	Fairview Avenue Construction – Southdale Line to Elm Street	



Construction is well underway on the Fairview Avenue Construction project! More information about the project is available at www.stthomas.ca/fairview. For more information on how this project affects you, please visit our Frequently Asked Questions page: www.stthomas.ca/construction-faq.

Work completed to date:

- Watermain installation from Southgate Parkway to Axford
- Storm drains have been installed from Southdale Line to Southgate Parkway
- Building of the road base from Southdale Line to Southgate Parkway
- Multi-use path construction has begun south of Bill Martyn Parkway

Work scheduled for the next week:

- Install road base from Bill Martyn Parkway to Axford Parkway
- Begin temporary watermain installation from Axford Parkway to Elm Street
- Storm sewer and watermain installation from Axford Parkway to Leger Avenue

Water Service Disruptions:

- Water services will be interrupted for a short period of time when the contractor connects your service to the temporary watermain. Notification will be provided in advance of a disruption.

Road Closures and Access:

- Fairview Avenue will be closed from Southdale Line to Elm Street during construction.
- **Southdale Line will be closed for 6 weeks starting on Tuesday, April 20, 2021 for the construction of the Southdale Line Roundabout**
- Access to the St. Joseph High School will be restricted to the front entrance at Bill Martyn Parkway from April 12 to April 16 (March break). The rear parking lot will be unavailable during this time.
- Driveway access may be interrupted periodically during construction. Notification will be provided.

Construction Safety:

- Your safety is very important to us. Please use caution and respect the work zone
- Maintain a safe distance from any moving equipment, stock piles or trenches